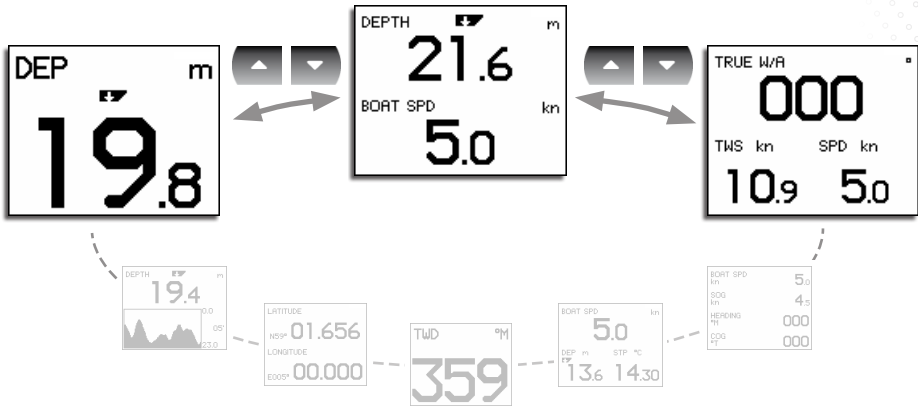
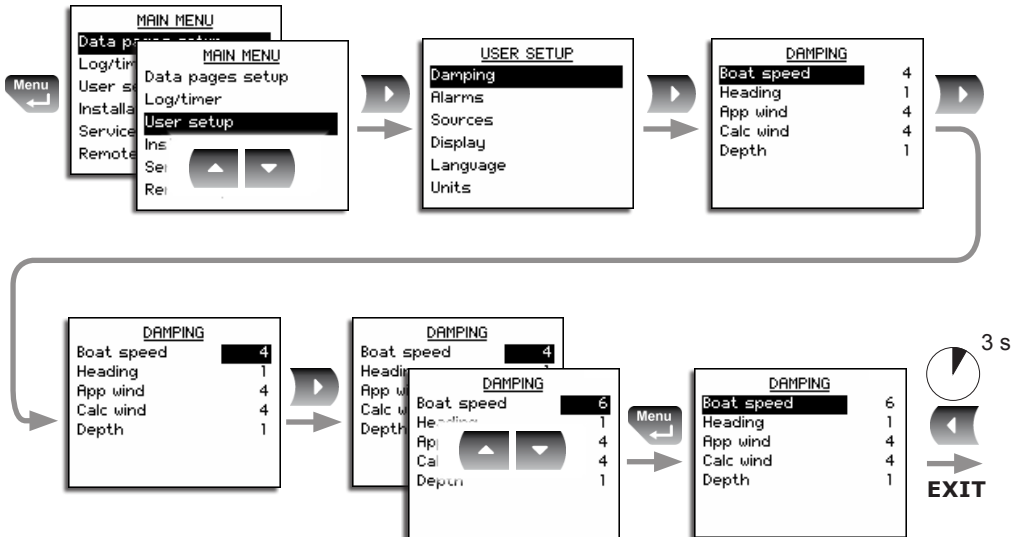


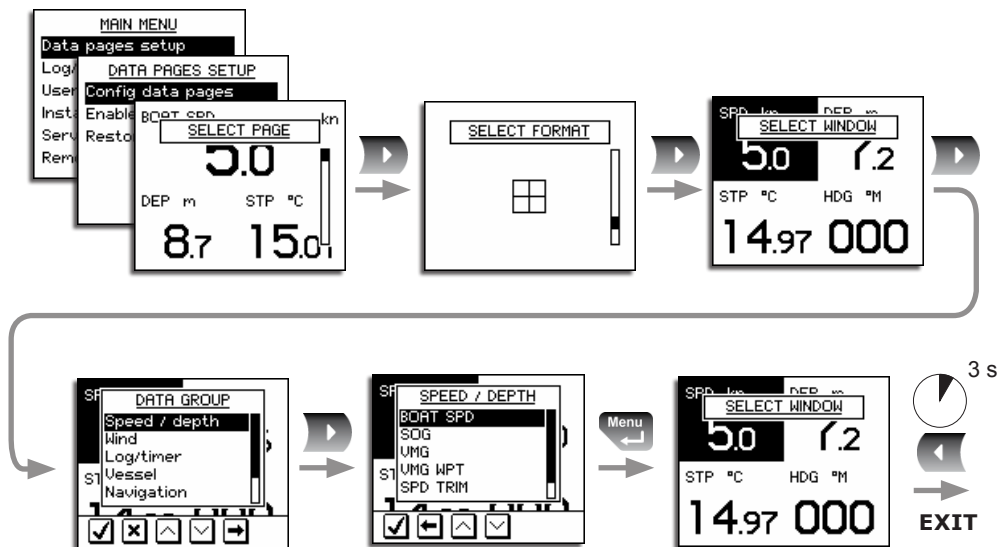
► **Accessing pages**



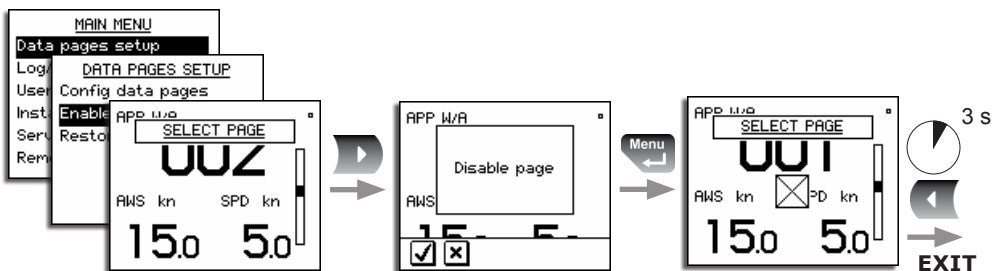
► **Menu navigation**



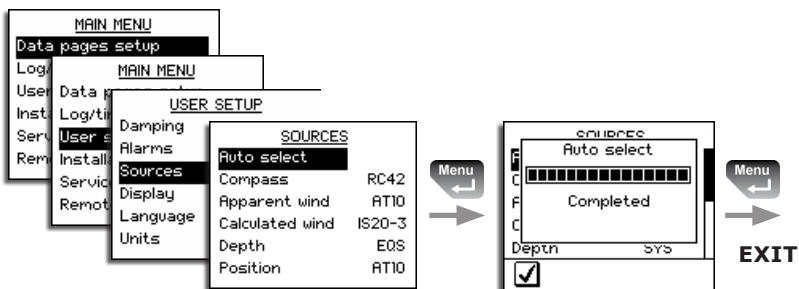
► Configuring data pages



► Disabling pages

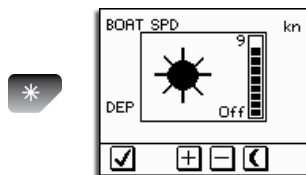


► Automatic source selection

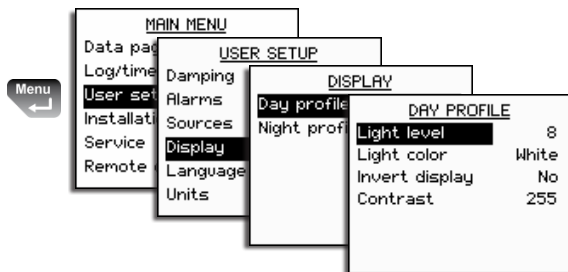


► Display adjustments

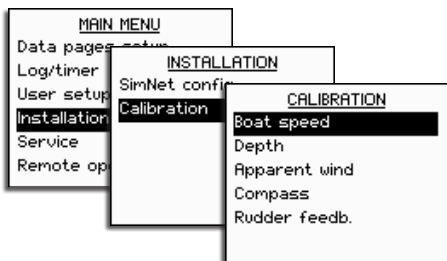
Adjusting backlight



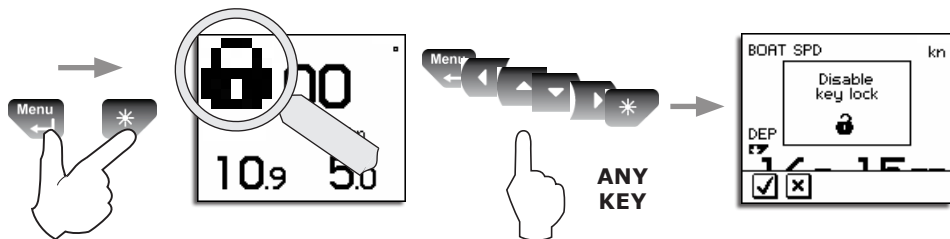
Changing display settings



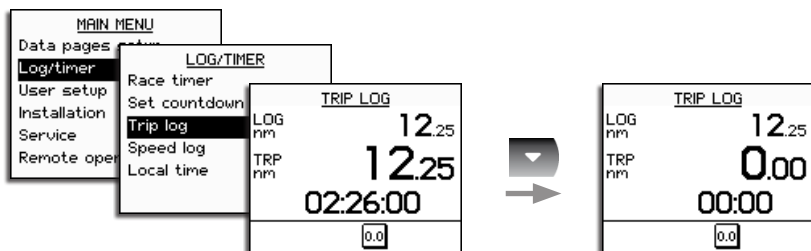
► Calibration



► Key lock

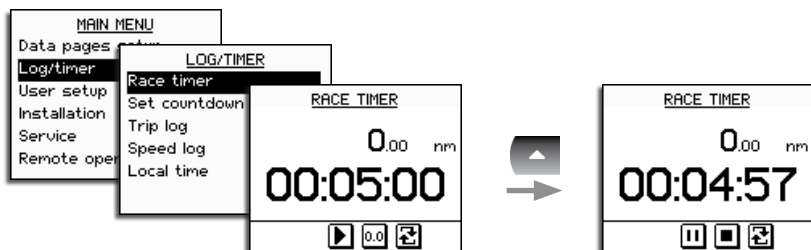


▶ Trip logging

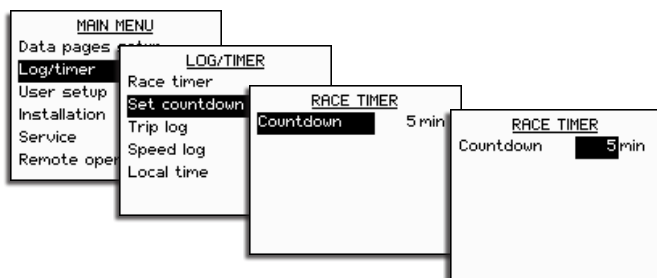


▶ Race timer

Starting the timer



Setting the countdown time



User manual available on:

 simrad-yachting.com