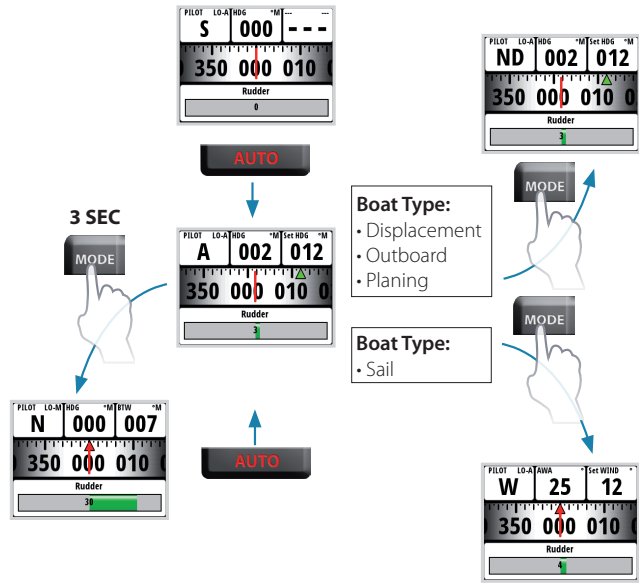


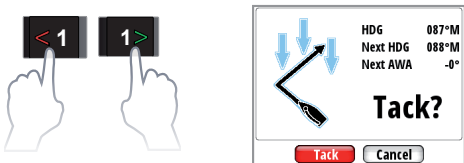
## Changing the Autopilot mode



Mode Symbol	Function / Mode
<b>S</b>	Standby
<b>A</b>	Auto (Compass)
<b>W</b>	Wind
<b>N</b>	Navigation
<b>ND</b>	NoDrift
<b>NFU</b>	Non Follow Up (Power steer)

## Tack & Gybe in Wind mode

To tack or gybe in Wind mode press both 1° course keys on the OP10 Autopilot controller.



## IS40 Display & OP10 Autopilot Controller

**SIMRAD**

EN

## Quick Reference Guide



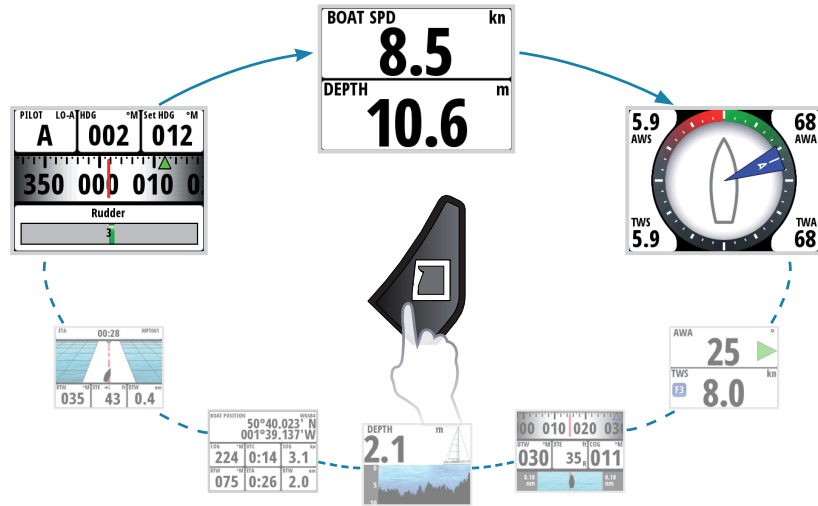
### IS40 Display Keys

	Menu / Enter / Lighting: Used to enter the main menu, select sub menus and confirm selection. Note: Press and hold the Enter key for 3 seconds takes you directly to the display setup lighting level screen. If the lighting level is set below 5 it will automatically increase to 5. Use the up and down keys to set the desired level and press Enter to confirm.
	Page: Scrolls through the eight default display pages and navigates back a step in menu. Note: the eight default display pages including the autopilot page can be customized to display the required data.
	Directional keys: Scrolls up and down through selected menus / set values.

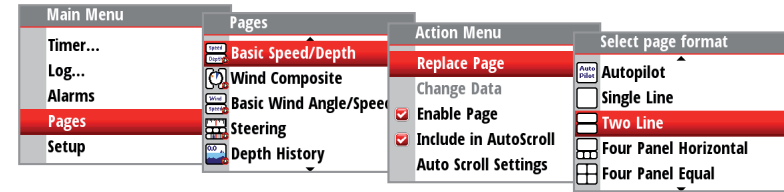
### OP10 Autopilot Controller Keys

	Changes the autopilot mode. When in Auto mode, pressing the MODE key: 1) when the boat type is set to Sail: changes to Wind mode. 2) when set to any other boat type: enters into NoDrift mode. 3) for all boat types: (long key press) enters into Navigation mode; which will require confirmation via the display before it is engaged.
	STBY (or OFF): Disengages the autopilot. Places the autopilot into Standby mode.
	Left 1°: Adjust the set course or wind angle 1 degree / steer to Port in Non Follow Up (NFU) mode. When pressed in Standby mode this will enter the autopilot into NFU mode.
	Right 1°: Adjust the set course or wind angle 1 degree / steer to Starboard in NFU mode. When pressed in Standby mode this will enter the autopilot into NFU mode.
	Left 10°: Adjust the set course or wind angle 10 degrees / steer to Port in NFU mode. When pressed in Standby mode this will enter the autopilot into NFU mode.
	Right 10°: Adjust the set course or wind angle 10 degree / steer to Starboard in NFU mode. When pressed in Standby mode this will enter the autopilot into NFU mode.
	Engage the autopilot / Acknowledge tack/gybe or navigation course change.

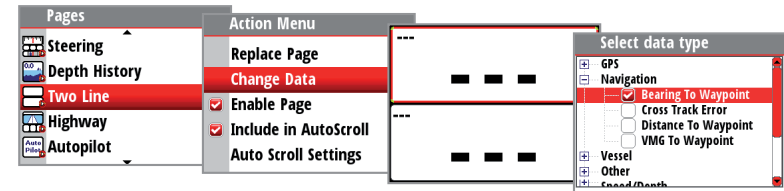
## Page navigation



## Replacing a data page



## Creating custom pages



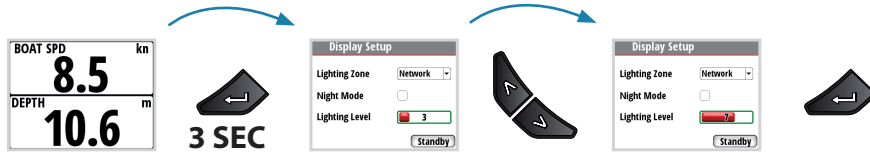
## Menu navigation



## Disable / Enable a data page



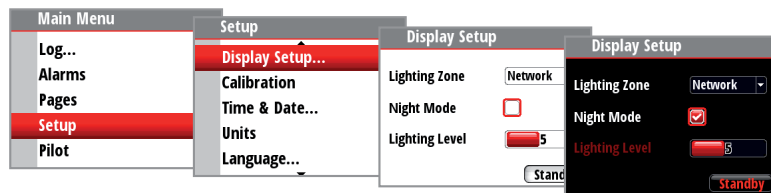
## Back lighting



## Start / Stop timer



## Night mode



## Reset trip log

