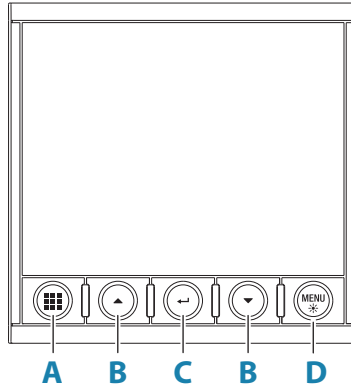


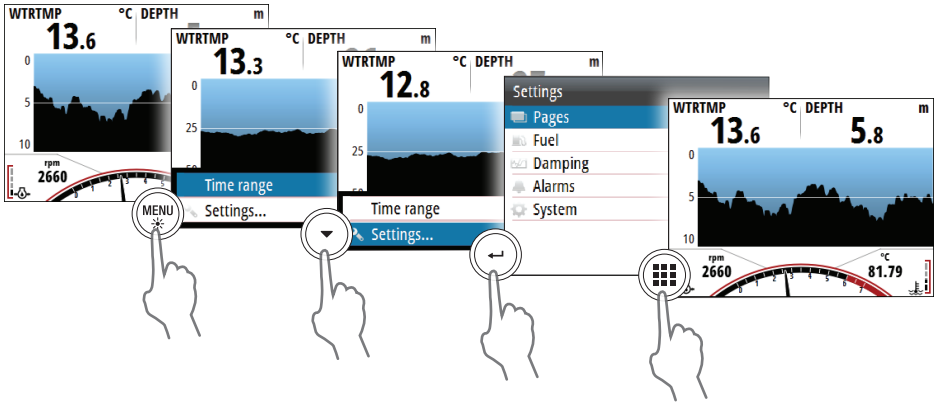
## Front panel and keys



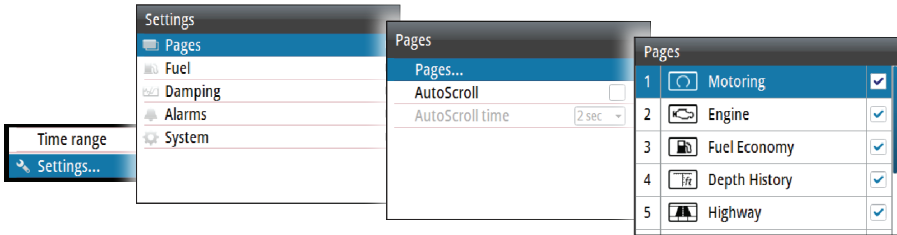
<p><b>A</b></p>	<p><b>Pages key</b></p> <p>With no menu active:</p> <ul style="list-style-type: none"> <li>• Press to scroll through the enabled pages</li> <li>• Press and hold to display a list of enabled pages from where you can select directly the page to display</li> </ul> <p>Menu and dialog operation:</p> <ul style="list-style-type: none"> <li>• Press to return to previous menu level or to exit a dialog</li> </ul>
<p><b>B</b></p>	<p><b>Arrow keys</b></p> <ul style="list-style-type: none"> <li>• Press to move up and down in menus and dialogs</li> <li>• Press to adjust a value</li> </ul>
<p><b>C</b></p>	<p><b>Enter key</b></p> <ul style="list-style-type: none"> <li>• Press to select a menu option and to enter the next menu level</li> <li>• Press to activate/deactivate a menu/dialog option</li> </ul>
<p><b>D</b></p>	<p><b>MENU/Backlight key</b></p> <ul style="list-style-type: none"> <li>• Press once to display the page menu</li> <li>• Double-press to display the Settings menu</li> <li>• Press and hold to open the display setup dialog from where you can adjust the backlight</li> </ul>

→ **Note:** All screenshots are taken with invert day color turned on.

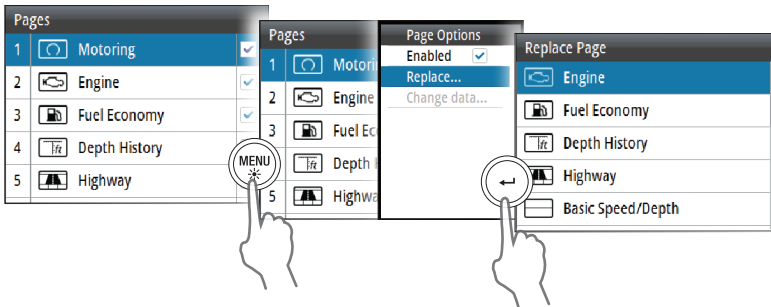
## Menu navigation



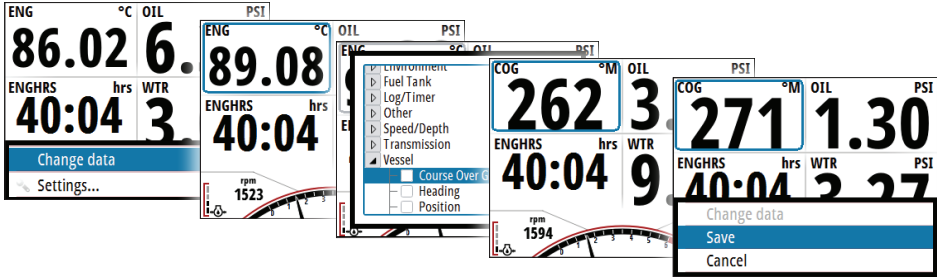
## Enable or disable a page



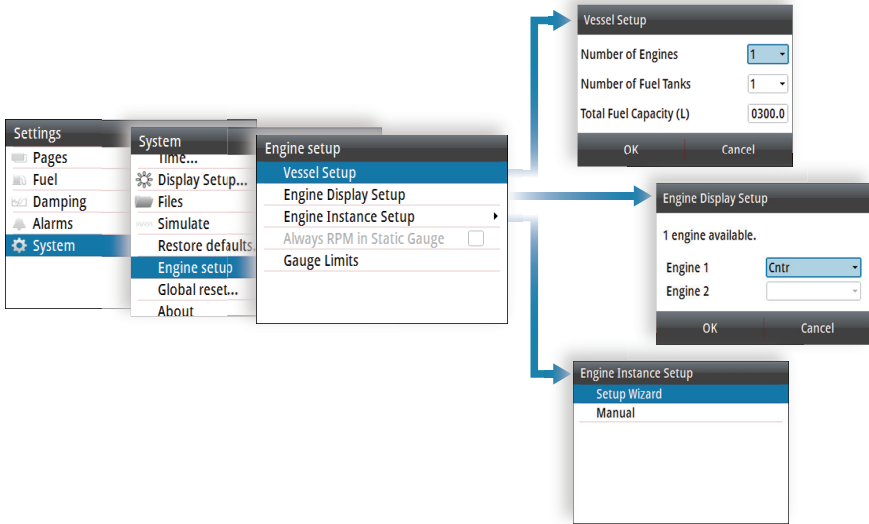
## Replace a page



## Changing page data

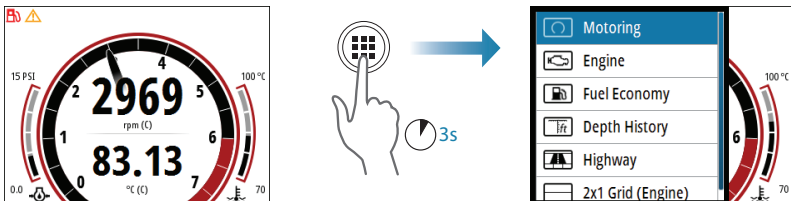


## Engine setup

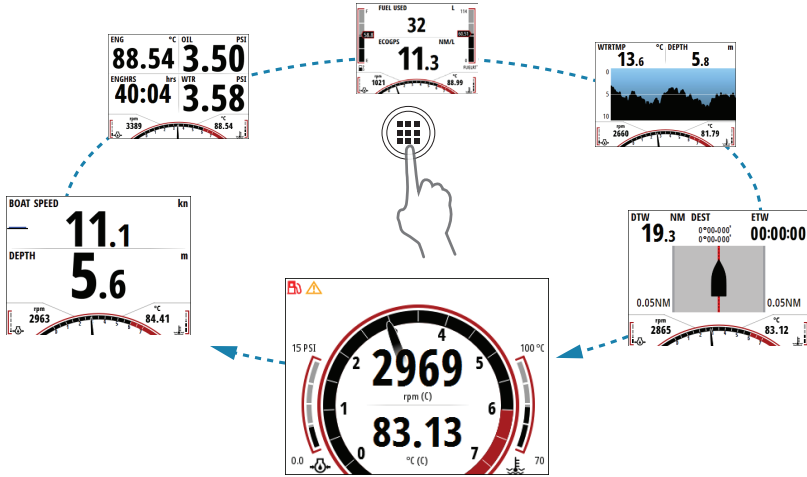


## Selecting a page

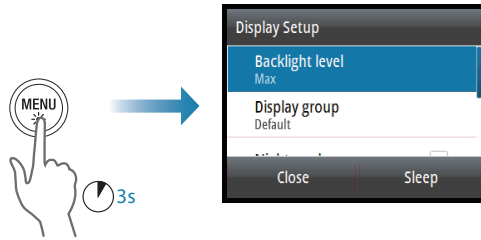
### Directly selecting a page



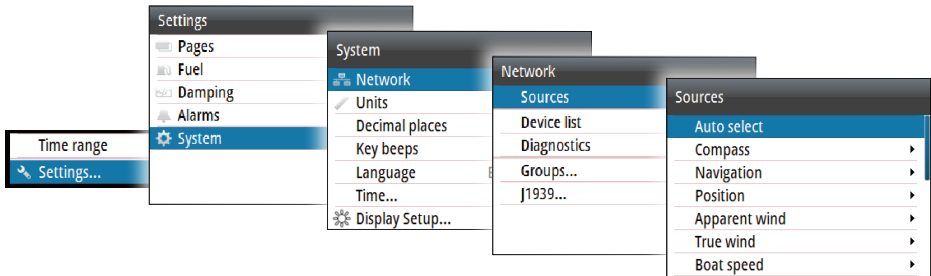
## Scrolling through enabled pages



## Display setup



## Data source selection





**SIMRAD**

