

1	Direct Access Keys (DAK). Provide direct access to a page. Repeated presses of each DAK cycles through several different pages that relate to the DAK
2	PLOT/MARK key. A short press activates the Plot menu, a long press positions a waypoint at the vessel position
3	Rotary knob. Used to maneuver in the menu system, and for context specific operation
4	GOTO/VESSEL key. A short press activates the Goto menu, a long press centers the chart to vessel position
5	✓ (Tick) key. Activates/confirms current selection
6	X (Exit) key. Used to close dialogs, and to return to previous menu level. Removes the cursor from the screen on radar, sonar and chart panels
7	Cursor keypad used to move the cursor on the display, and to maneuver in the menu system
8	MENU key. A single press displays the context menu for active panel/overlay/operation. Pressing the key twice displays the Settings menu
9	WIN key, used on multiple panels pages. A short press toggles between the panels, a long press expands active panel to a full page panel
10	Zoom keys for radar, sonar and chart panels
11	MOB key. A long press positions a MOB waypoint at the vessel's position
12	Alpha numeric keypad used for entering numbers and text in dialog boxes
13	Power key. A short press activates the Light dialog, a long press turns the unit off
14	Autopilot/Standby Key. When the autopilot not is engaged a short press brings up the pilot pop-up. When in auto mode a short press switch the system to manual steering

▶ Turning the unit on/off

Power ON



Standby



Power OFF

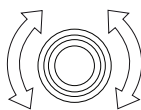


▶ Adjusting backlight

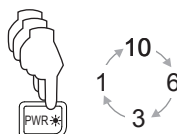
Display dialog



Increase/Decrease

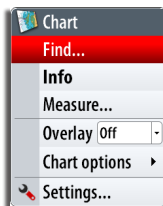


Toggle preset values

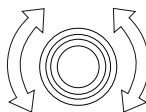


▶ Operating the menu system

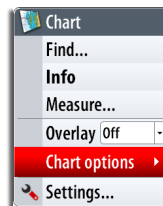
Display menu



Select menu item



or



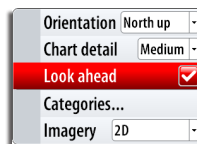
Exit menu



Toggle selection



or



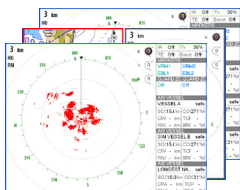
► Selecting Applications

Select page

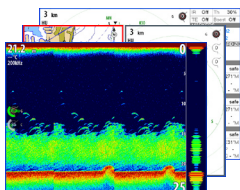
CHART



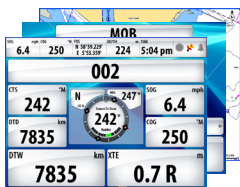
RADAR



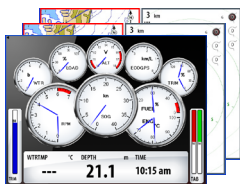
ECHO



NAV



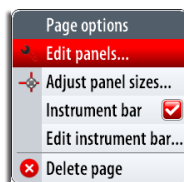
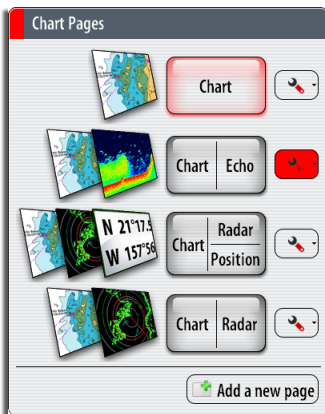
INFO



PAGES



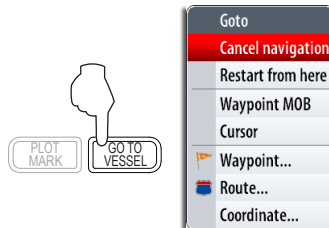
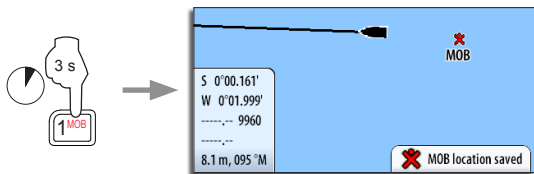
Edit page groups



► Man Over Board (MOB)

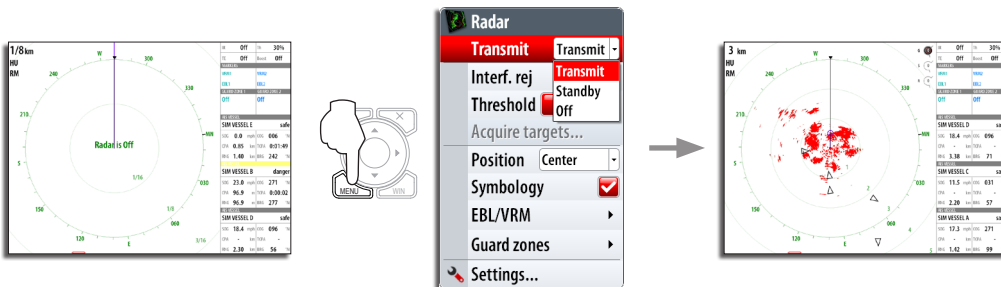
Activating the MOB function

Cancelling the MOB function



► Using the radar

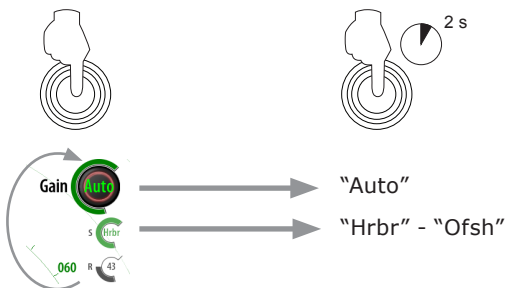
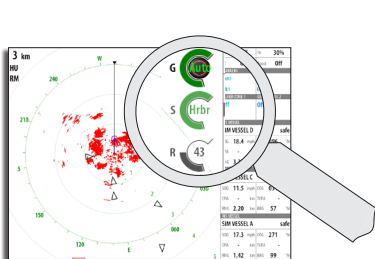
Turning radar transmitting On/Off



Adjusting radar image

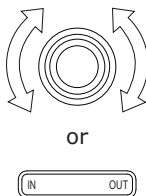
Select parameter

Select preset values

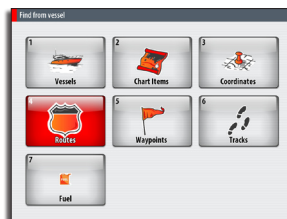
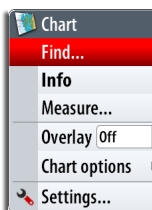
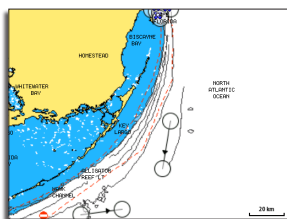


► Using charts

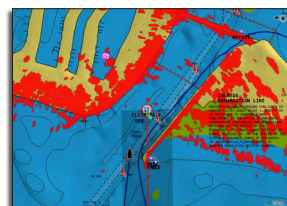
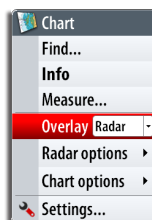
Changing chart range



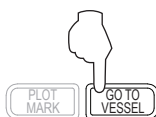
Finding chart objects



Displaying radar overlay on chart pages



► Navigating

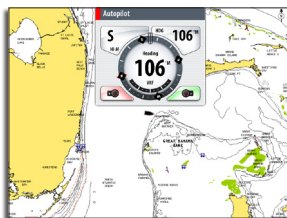
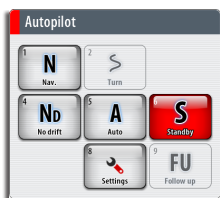
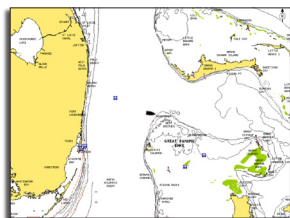


NOTE:
This prompt will appear only with optional Simrad autopilot integration.

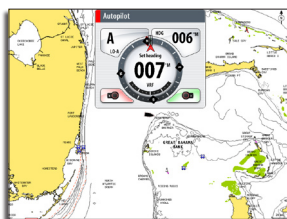
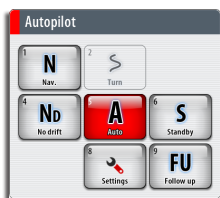
► Using the Autopilot

Activating the Pilot Pop-up

The Pilot pop-up must be active to operate the autopilot. This pop-up can be displayed on top of any page.



Selecting autopilot mode

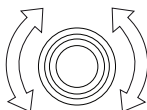
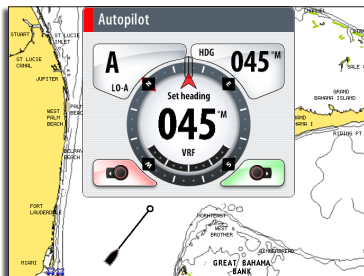


Returning to manual steering

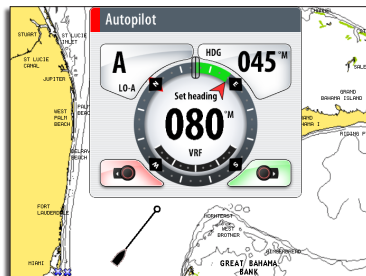


A short press on the **STBY/AUTO** key switches the system to manual steering.

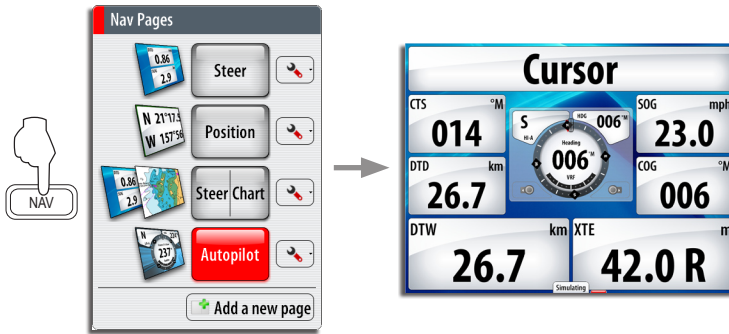
Changing autopilot course



or



The Autopilot panel

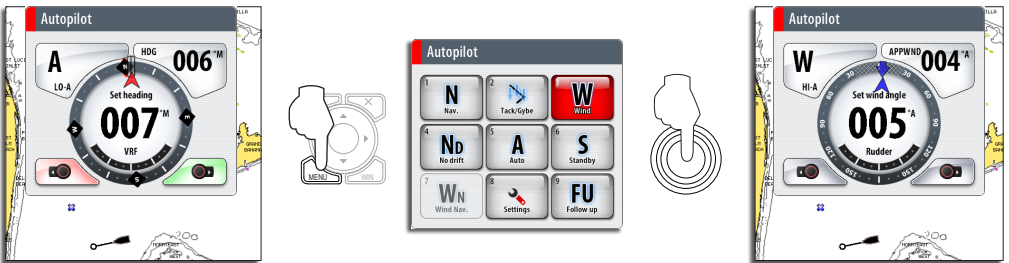


NOTE: The rotary knob must be pressed to change course from the Autopilot panel!

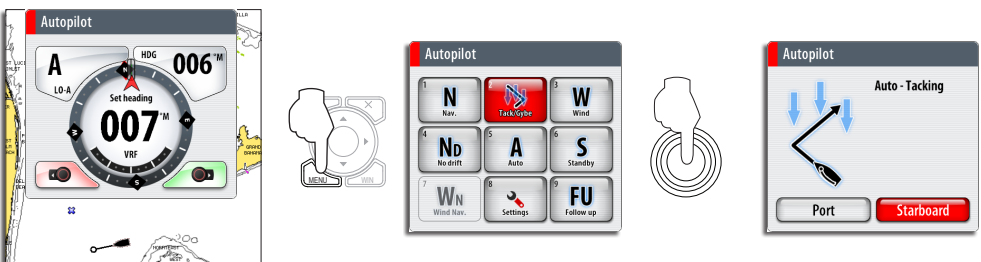
► Sailing with autopilot

Maintaining a fixed wind angle

Before initiating Wind steering adjust the boat heading until wind is according to selected wind angle.

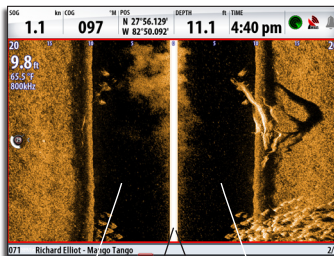
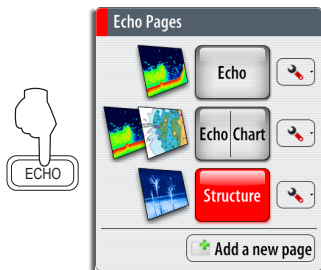


Tacking



► The StructureScan panel

Open a StructureScan page

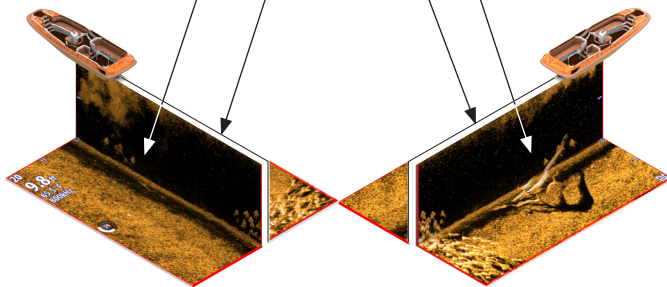


Left water column

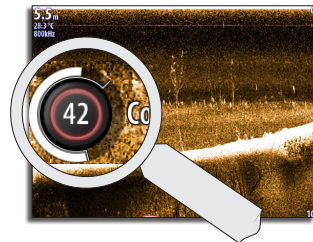
Right water column

Surface

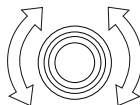
Altering views



Change color intensity



Change value



User manual available on:

 simrad-yachting.com