

Turning the NSO evo2 system on and off

Press the **Power** key/button:

- on the front of the NSO evo2 Processor
- on the front of the monitor (depending on type of monitor and configuration)
- on the OP40 remote controller (accessory)
- on the **Home** page or **System Controls** dialog (turning off only).

How to operate the system

The NSO evo2 multi-function system offers several choices of operation:

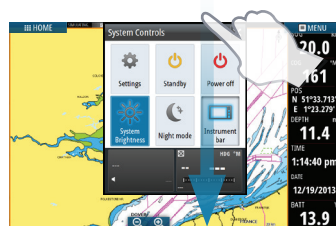
Using the touchscreen: Multi-touch gestures for object selection and menu access. Requires a touchscreen monitor in the system.

Using external controller: Keyboard, Mouse or Trackball connected via the USB port, or OP40 remote controller connected via the network. For more details, refer to the NSO evo2 Operator manual and the separate manual for the OP40.

System Controls dialog

Quick access to system settings, changing between day and night mode, turning off the NSO evo2 unit, etc.

Activate the dialog by swiping from the top of the screen or by pressing a **Power** button/key.



→ **Note:** The content of the **System Controls** dialog depends on connected equipment and active panel.

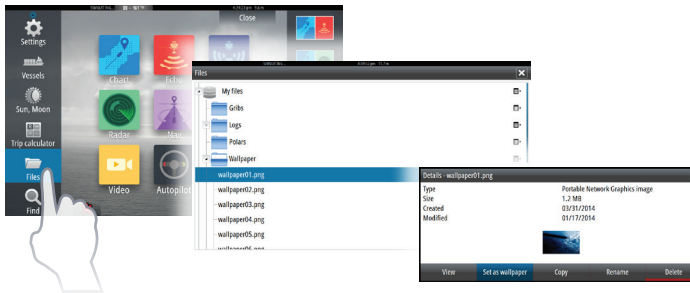
Home page

Activate the Home page by selecting the **Home** button.



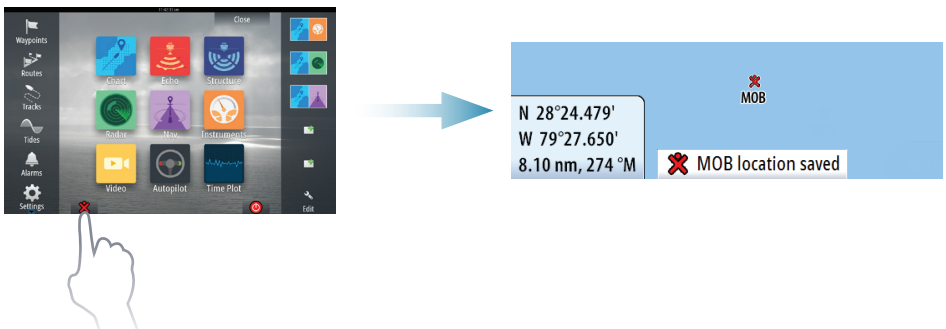
1 Application buttons
2 Tools
3 Close button
4 Favorites
5 Man Over Board (MOB) button
6 Power button

You can customize the Home page background by adding your own .png or .jpg file.



Positioning a MOB mark

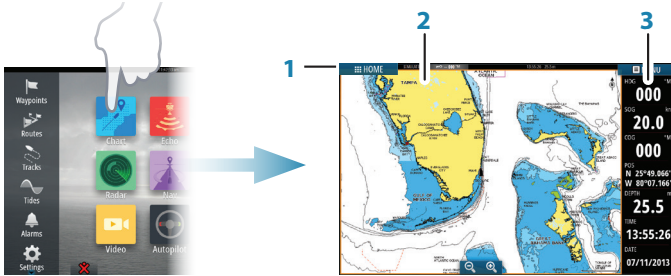
Save a Man Over Board (MOB) mark at vessel's position by selecting the **MOB** button on the Home page.



Application pages

Activate an application page by:

- selecting the application button (full page panel), by
- selecting a favorites button, or by
- pressing and holding an application button to select a predefined split page.

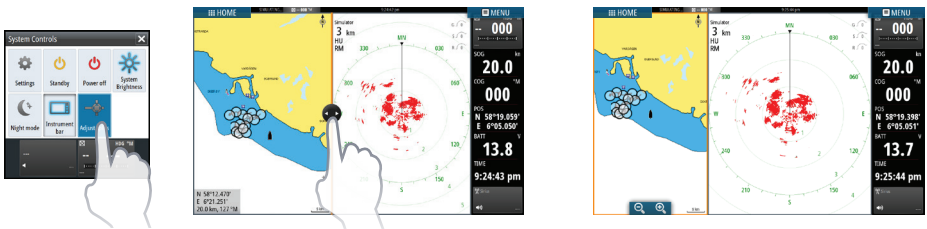


1. Status panel
2. Application panel
3. Instrument bar

Adjust panel size

The size of the panels in a split page can be adjusted.

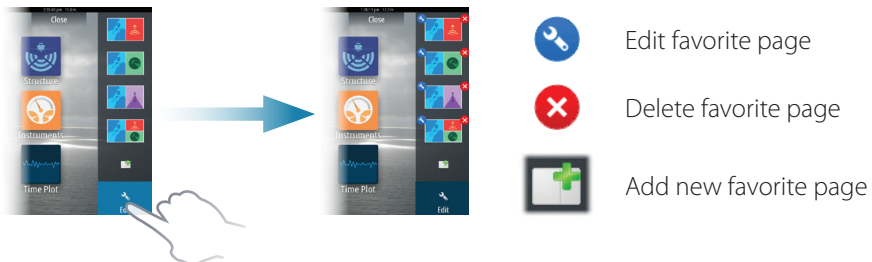
1. Select the adjust split button in the **System Controls** dialog to show the resize icon.
2. Drag the resize icon to set preferred panel size.
3. Save the changes by tapping the screen.



Edit a favorite page

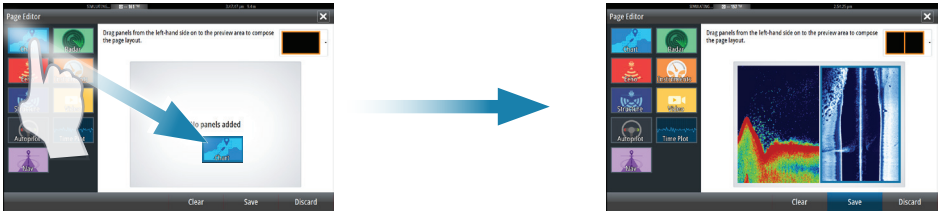
Enter the Favorites edit mode by:

- selecting the Edit icon, or by
- pressing and holding a favorite button.



Edit an existing favorite page or configure a new page by dragging panel icons into or out from the preview area.

To save the changes, tap the **Save** button.

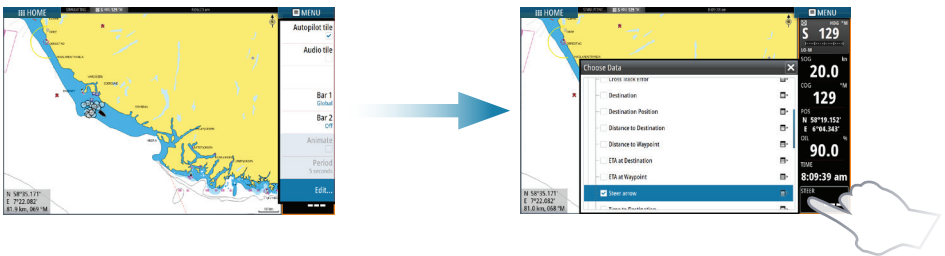


Instrument bar

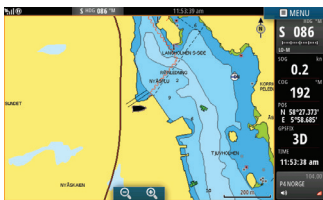
Select the Instrument bar button in the **System Controls** dialog to turn the bar on/off.

To edit the content of the Instrument bar:

1. Tap the **Instrument bar** to make it active.
2. From the **MENU**, select the edit option.
3. Tap the item you want to change.
4. Select the information you want to display in the Instrument bar.
5. Select Finish editing in the menu to save the changes.



Charts



- Zoom the chart by using spread or pinch gestures or by using the zoom buttons (**A**).
- Move the view in any direction by panning the chart.
- Display information about a chart item by tapping the item.

Waypoints

Save a waypoint at vessel's position by selecting the new waypoint option in the menu.

Save a waypoint at selected position:

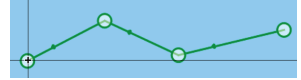


1. Tap the chart to place the cursor at selected position.
2. Select the new waypoint option in the menu.

Routes

Create a route:

1. Tap the chart to activate the cursor.
2. Select the new route option in the menu.
3. Tap the chart to position the first routepoint.
4. Continue tapping the chart to position additional waypoints.
5. Save the route by selecting the save option in the menu.



Autorouting and EasyRouting (not available in the US)

1. Position at least two routepoints (first and last in a route) or open an existing route for editing.
2. From the menu, select **Autorouting** then **Entire Route**, if you want the system to add new routepoints between first and last routepoints; or choose **Selection**, if you want to manually select the routepoints that define the limits for the autorouting.
3. Select **Accept** to start the autorouting.
4. Select **Keep** to accept the routepoints' positions.
5. Save the route by selecting the save option in the menu.



First and last routepoint - Entire Route



Result after Autorouting



Two routepoints selected (shown in red)



Result after Autorouting

- **Note:** These two features require compatible cartography:
Autorouting: Navionics+ and Navionics Platinum.
EasyRouting: Jeppesen CMAP MAX-N+.

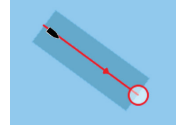
Overlay

Add a radar, weather or StructureScan overlay on the chart by selecting the option in the menu.

Navigating

Navigate to cursor's position:

1. Tap the chart to position the cursor.
2. Select the **Goto Cursor** option in the menu.

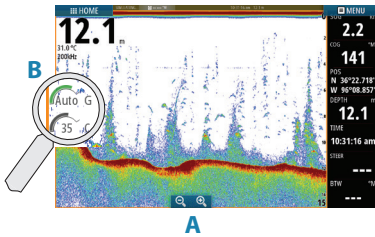


Navigate a predefined route:

- tap the route to make it active, then select the route option in the menu followed by the start point, or
- select the route from the Routes dialog, then select forward or reverse direction.



Echosounder



- Zoom the image by using the zoom buttons (A).
- View echosounder history by panning the image.
- Adjust gain and color from the slide bar, displayed by tapping the gain or color icon (B).
- Toggle auto gain on/off from the menu.

Toggle available echosounder frequencies from the menu. Available options depend on type of transducers connected to the system.

Single frequency transducers	50 kHz	Lower resolution images. Best performance in deep water
	83 kHz	Greater water coverage
	200 kHz	High resolution images and better target separation in shallow water
Chirp transducers	Low CHIRP	Lower resolution images. Best performance in deep water
	Medium CHIRP	Better depth penetration than High CHIRP, but with minimal loss of target definition
	High CHIRP	High resolution images and better target separation in shallow water

StructureScan

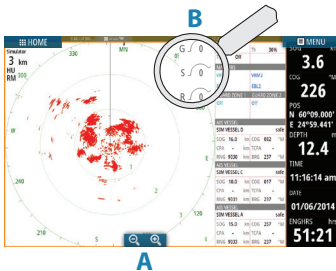


- Select Downscan or Sidescan view from the menu.
- Zoom the image by tapping the screen to position the cursor, then tap the zoom buttons (A).
- Adjust contrast manually from the slide bar, displayed by tapping the Contrast icon (B).

Toggle between available StructureScan frequencies from the menu.

455 kHz	Excellent resolution and greater range than 800 kHz
800 kHz	Better definition than 455 kHz at shallower depths

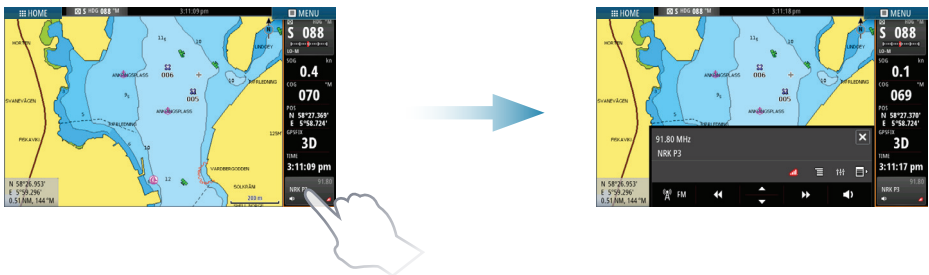
Radar



- Turn the radar transmitting on/off from the menu.
- Set the range by using the zoom icons (A).
- Adjust gain, sea clutter and rain clutter settings from the slide bar, displayed by tapping the settings icons (B).

Audio

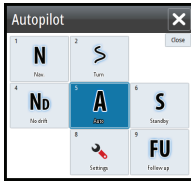
Activate the Audio overlay by tapping the **Audio** tile in the Instrument bar.



Autopilot

The autopilot can be activated from any panel.

1. Tap the **Autopilot** tile in the Instrument bar.
2. Select the autopilot mode in the Autopilot pop-up.



S	Standby	Autopilot is passive. Used when manually steering at the helm
FU	Follow-up *	The rudder angle is set by OP40 (accessory). The rudder will be moved to set angle
NFU	Non-Follow-up	The rudder movement is controlled by the Port and Starboard buttons in the Autopilot pop-up, or by another NFU unit
A	Auto	Automatic steering: maintaining the set heading
Nd	NoDrift	Automatic steering: keeping the vessel on a straight bearing line by compensating for drift
N	Navigation	Automatic steering: navigating the vessel to a specific waypoint or through a route using GPS data
W	Wind **	Automatic steering: maintaining the set wind angle
Wn	Wind navigation **	Automatic steering: navigating the vessel to a specific waypoint or through a route using both wind and GPS data

* Not applicable for virtual rudder feedback configurations.

** Only available if the boat type is set to Sailboat.

➔ **Note:** You switch the autopilot to Standby mode from any automatic mode by a short press on the **Standby** button in the Autopilot pop-up.

Adjust set heading / course / wind angle



Adjust set heading (Auto mode), set wind angle (Wind mode) and set course (NoDrift mode) by tapping the **Port** or **Starboard** buttons in the autopilot pop-up.



For more details, see the NSO evo2 Operator manual.