



## ADDENDUM NSS evo2

- **sw release 3.5**

This addendum documents new features that are included in NSS evo2 software release 3.5, and that are not described in the NSS evo2 Operator manual or other documentation.

Feature	Page
TripIntel	3
• Current trip statistics	3
• Automatic trip recording	3
• Start and stop trip recordings	4
• Long-term statistics	4
• Estimated fuel range ring	4
• Fuel gauge	4
• Tide gauge	5
• View trip recordings	5
SonicHub 2 support	6
• SonicHub 2 Device Information	6
• SonicHub 2 is Bluetooth enabled	6
• Pandora	7
New SiriusXM Weather features	8
• Marine zones	8
• New View menu options:	8
- Surface features	8
- Cloud tops	8
- Echo tops	8
System and network devices analyzer	8
New dashboard layouts	9

StructureScan® 3D is supported with this release. For more information, refer to the documentation delivered with the StructureScan 3D unit.

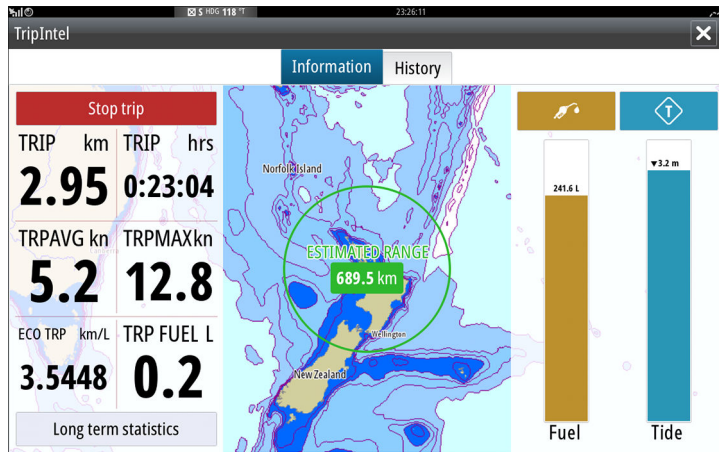
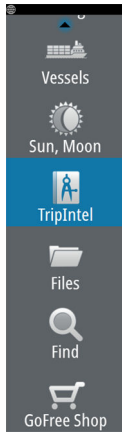


## TripIntel

TripIntel lets you store and recall information on trips. You can use the information to make informed decisions prior to commencing a trip, or when a trip is underway.

→ **Note:** For best results, it is recommended to run software version 2.4.0 or newer in your EP-85R Storage Device.

Select the TripIntel button on the Tool panel to display the TripIntel page.



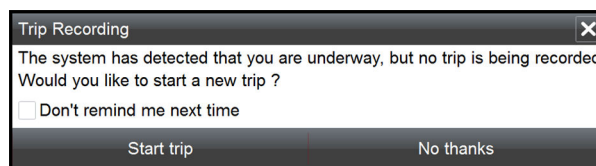
### Current trip statistics

The Information tab on the TripIntel page shows current trip statistics:

- Distance traveled
- Time traveled
- Average speed
- Maximum speed
- Fuel economy
- Fuel used

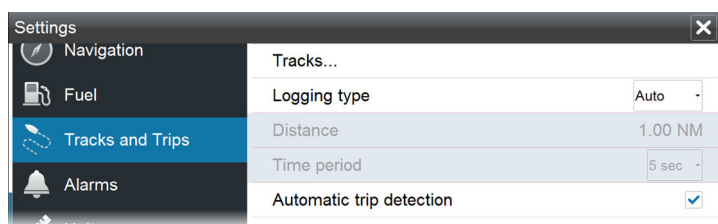
### Automatic trip recording

There is an automatic trip detection feature. When you start navigating you are prompted to start recording the trip if no trip is currently underway and your speed has been more than 2 knots for 20 seconds. You will be prompted to continue a trip or start a new trip if the trip was not explicitly saved before a power off.



You can manually start the recording later from the TripIntel page.

You can turn off the automatic trip detection feature from the Tracks and Trip settings dialog.



Long term statistics

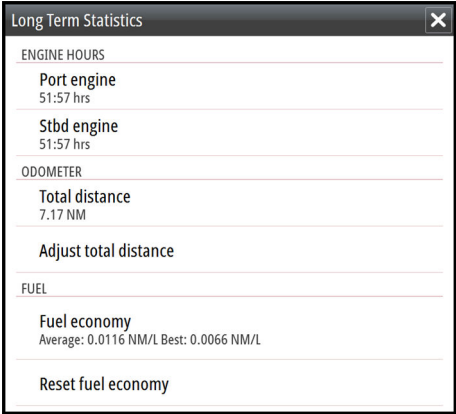
### Start and stop trip recordings

If you have selected to not start recording a trip from the automatic trip detection prompt, you can manually start a recording from the Triptel page.

The **Start** and **Stop** trip options let you specify a trip recording. You can use them to segment a single passage into multiple trips providing a finer level of control of the information that is logged for a journey.

### Long-term statistics

Select Long Term Statistics to view seasonal trip information such as engine running hours, total distance traveled, and fuel economy.



### Adjust total distance

Select the Adjust total distance button to change the Total distance. Use this option if you have not recorded a trip or part of a trip that you have taken and want to include the distance in the Total distance statistic.

### Reset fuel economy

Select **Reset fuel economy** to reset the fuel economy in the Fuel economy gauge on the Instrument bar.

### Estimated fuel range ring

The Estimated fuel range ring on the Triptel page represents the estimated total distance that the boat can travel based on historical consumption, and the amount of fuel left in the tanks.

- **Note:** The Estimated fuel range ring represents fuel consumption on a one way trip only, it does not include fuel estimates for the return trip to your current location. It represents the distance in which your boat will completely run out of fuel.
- **Note:** The Estimated fuel range ring is calculated from the Vessel Fuel Remaining only, not level sensors. When recording your refueling, you must 'Set to full' or 'Add fuel' for the range ring to be accurate.

### Fuel gauge

The Fuel Gauge on the Triptel page, and on the economy gauge is displayed based on the setting in the Vessel Setup page. You must select the Fuel Remaining measurement type.

- Fuel consumed by engine(s)
- Fuel tank level sensor(s)

→ **Note:** This is only for the Triptel page and the economy graph.

### Record your refueling

Select the Fuel button to record the amount of your refuel. The refuel information is used for calculating the Vessel Fuel Remaining amount.



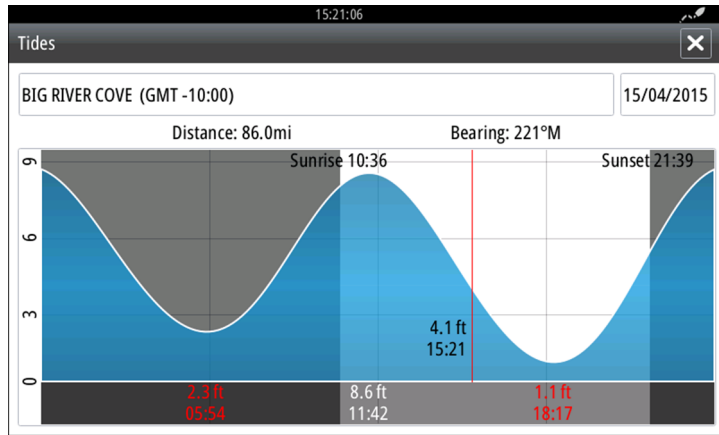


### Tide gauge

The Tide gauge on the TripIntel page shows the tide height at the selected tide station.

### Tide graphs and stations

Tide stations on Chart cards provide tide information. Select the Tide button to view tide graphs and specify which Tide station provides tide information. If no tide station is chosen, tide information from the nearest tide station is used.



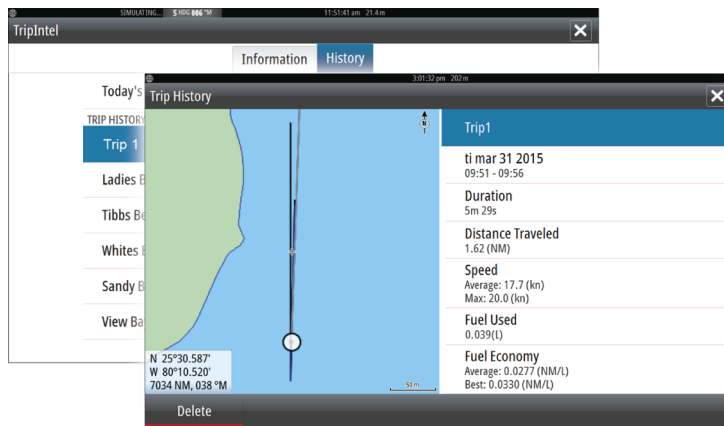
### View trip recordings

Recorded trips are listed in the History tab on the TripIntel page. To view detailed trip information select a trip in the list.

Trip Name	Time	Distance (NM)
Trip 1	14m 37s	4.39
Ladies Bay-Karaka B	11m 10s	3.62
Tibbs Beach-Coxs Bay	45m 10s	14.10
Whites Bay-Sandy Bay	37m 45s	11.37
Sandy Bay-Little Bay	17m 13s	5.03
View Bay- Shelly Bay	1h 14m	20.00

### Change trip recording names

Trips are given generic names when they are created. You can change the trip name to a more meaningful one by selecting it on the History list and then select the name in the Trip History details dialog. This opens the Trip name dialog where you can change the trip name.

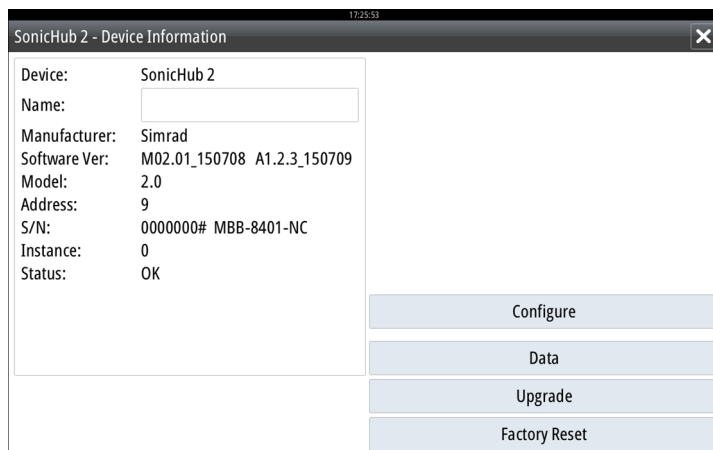


## SonicHub 2 supported

A SonicHub 2 connected to the NMEA 2000 network is supported.

### SonicHub 2 Device Information

Open the Network Settings dialog and select the SonicHub 2 device in the Device list. This opens the SonicHub 2 Device Information dialog.



### Configure

Select to configure the device.

### Upgrade

Updates the device software.

→ **Note:** A USB memory stick with the software upgrade must be plugged into the device. Periodic software updates may be available from the product website. Detailed instructions for how to install the software are included with the upgrade files.

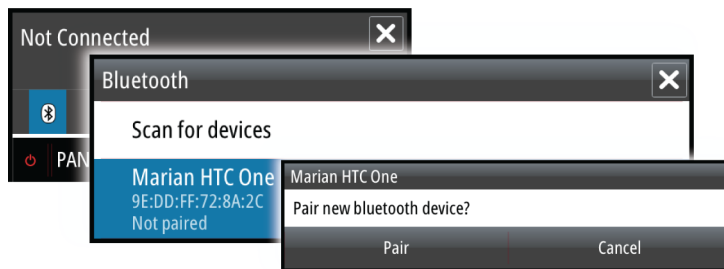
### Factory Reset

Resets the device to factory defaults.

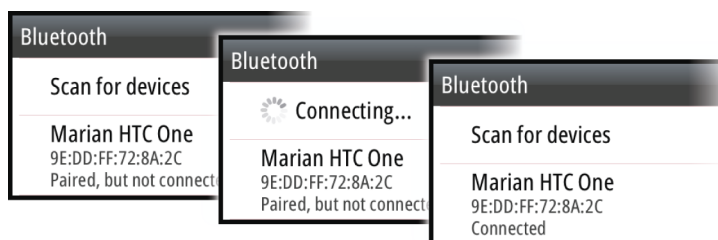
### SonicHub 2 is Bluetooth enabled

The SonicHub 2 is a Bluetooth enabled device. You can use the SonicHub 2's built-in Bluetooth wireless to connect it to Bluetooth enabled audio devices.

To pair the SonicHub 2 to a Bluetooth enabled device select the Bluetooth devices icon in the **Controls** menu. Choose the Bluetooth device you want to pair to from the list of available devices and then select Pair.



The SonicHub 2 connects to the paired device.

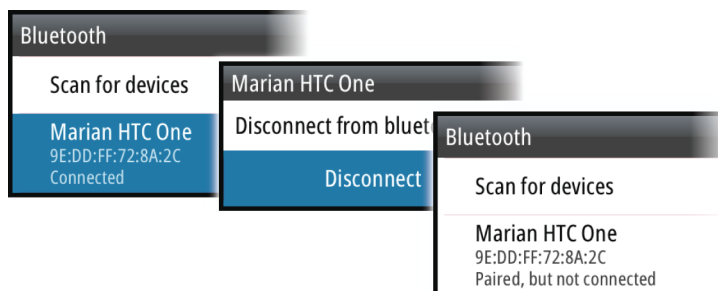


### Connecting and disconnecting paired devices

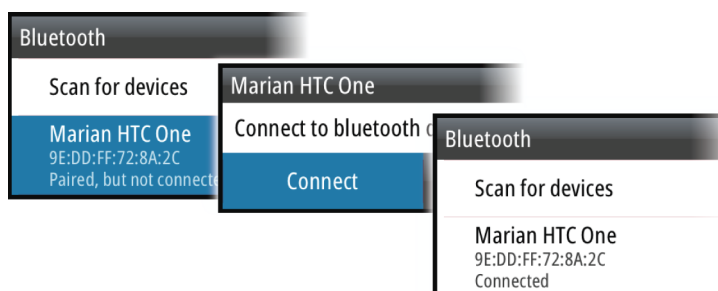
The SonicHub 2 automatically connects to a device when you pair them. You can pair it to several devices but only one device can be connected at a time.

You can manually disconnect and connect the SonicHub 2 to paired devices.

To disconnect a paired device, select the paired device in the device list and then select **Disconnect**.



To connect to a paired device, select the paired device in the device list and then select **Connect**.

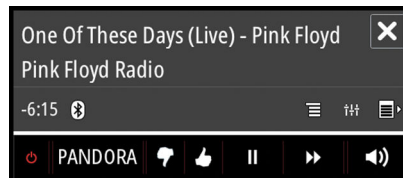


### Pandora

The SonicHub 2 supports streaming music from Pandora from an Android device (over Bluetooth) or IOS device (over USB and Bluetooth).

→ **Note:** You must be in a valid location to use Pandora. Refer to the Pandora website for more information.

Use menu controls to run Pandora on the smart device.



## New SiriusXM weather features

New SiriusXM weather features are supported. SiriusXM data sources have been integrated to provide improved accuracy and detail. Improvements include sea-surface temperature (coastal and the Great Lakes), nearshore wave height, and inland wind speed and direction. Support for new SiriusXM Canadian marine zone text is added and the Marine zone feature is changed. In addition, there are 3 new View menu options.

### Marine zones

Depending on your selected subscription, SiriusXM services includes access to weather reports for U.S. and Canadian Marine Zones, with the exception of the high seas zones. You can select a marine zone on a chart and view its forecast. You can also select a marine zone as your current zone of interest and you will be notified of any weather warnings in that zone.

### New View menu options

#### Surface features

Turns surface features on/off. Surface features include fronts, isobars, and pressure points. Surface features cannot be shown at the same time as Wind.

#### Cloud tops

Turn Cloud tops on/off. Cloud tops indicate the height of the top of the clouds. The color palette used is grey with darker greys indicating lower clouds. Cloud tops cannot be shown at the same time as Precipitation or Echo Tops.

→ **Note:** This feature is only available for certain SiriusXM subscriptions.

#### Echo tops

Turns Echo tops on/off. Echo tops indicate the tops of storms. The color palette used is the same as for Precipitation. Echo tops cannot be shown at the same time as Precipitation or Cloud Tops.

→ **Note:** This feature is only available for certain SiriusXM subscriptions.

## System and network devices analyzer

The system has a built-in network analyzer that creates a report of the devices installed on the NMEA 2000 and Ethernet network. It can also create a service report about your system and network devices such as the software versions, serial numbers, and information from the settings file.

To use the analyzer, open the About page of the System settings dialog and select Support. Two options are displayed:

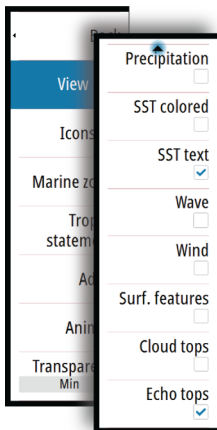
### Create report

Prompts you for information for support and creates the report with information automatically gathered from the network. You can add screenshots and log files to the report. The maximum report size is 20 MBs. You can save the report to a memory card and email it to support.

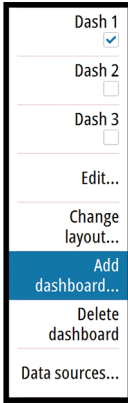
### Check system for updates

Checks if updates are available for compatible devices on your network.

→ **Note:** To ensure the internal list of software versions is up to date, your system must be connected to the internet.







### New dashboard layouts

New predefined dashboard layouts (3x4, Full, 2x1, 2x2) are available for the Instrument panel. You can select the new dashboard layouts when you add a new dashboard or change a dashboard's layout. After you select the new layout, specify which gauges are to be displayed in the dashboard using the edit menu option.

The '3x4' layout displays 4 rows with 3 gauges in each row, 'Full' displays one gauge, '2x1' displays 2 rows with 1 gauge in each row, and '2x2' displays 2 rows with 2 gauges in each row.

